

How to reverse the SD card port of the CAVS 205G USB/Plus Karaoke player



This instruction shows how to modify the SD card port of a CAVS 205G USB or CAVS 205G Plus karaoke player so that an SD card can be connected internally instead of externally. This approach is particularly useful for safeguarding the SD card when renting out or catering the karaoke player, ensuring it remains secure from customer access.

To begin, remove the six screws holding the top cover of the 205G player: one on each side and four on the back. Use a Phillips screwdriver to take out the screws.



Lift the top cover from the back and gently pull it away from the player.

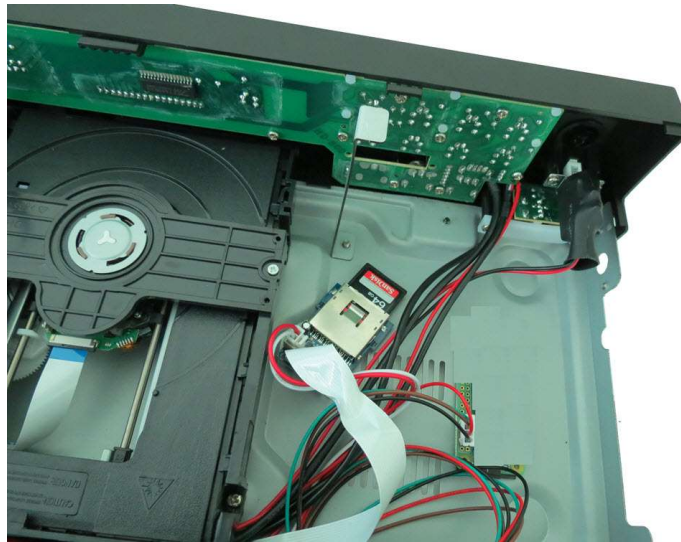


Inside, you'll find two screws securing the SD card port to the front panel. Undo these screws, allowing the SD card port to slide out from the front panel.



Use double-layer tape or velcro tape to secure the loosened SD card port to the bottom of the chassis, ensuring it is ready for internal connection. Be careful to

avoid any contact between the live circuitry of the SD card port and the bottom chassis.



Insert your SD card with songs into the SD card port. Close the top cover and turn on the player. Watch the TV/monitor for the customer interface.

You can input the song number you wish to play using the remote control or the front panel. If you have the 205G Plus model, you can also use your phone or tablet to select and play songs.

A crucial caution: be gentle when loosening or tightening the screws for the top cover. The grooves in the screw holes of the chassis can easily lose their grip, resulting in the screws spinning indefinitely.

For operation of the CAVS 205G Plus or CAVS 205G USB karaoke player, refer to the following documents:

[CAVS 205G Plus Karaoke Player User Manual](#)

[CAVS 205G USB Karaoke Player User Manual](#)

For questions and support, contact CAVS USA Inc. at 1-562-777-1850 (M-F 10AM-5PM EST) or email to techsupport@cavsusa.com