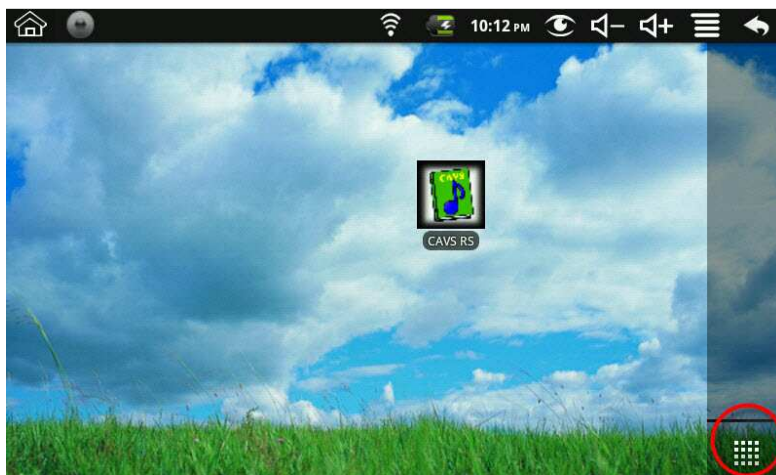


User Manual for E-Songbook

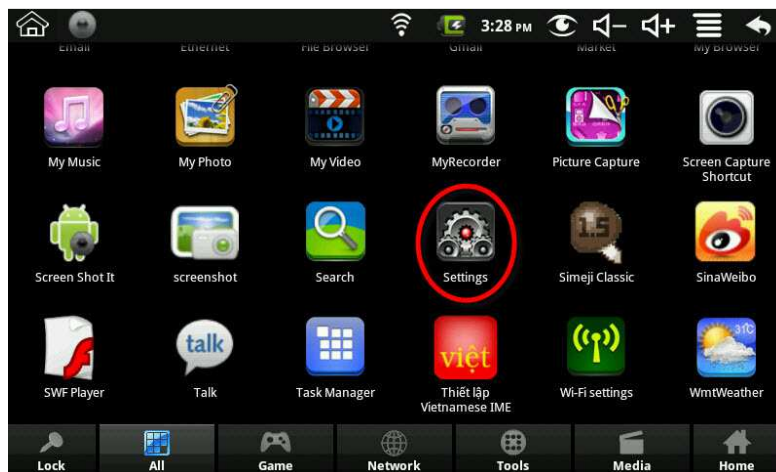
- **How to Set Up**
- **Specifications**
- **How to Operate**
- **How to Operate CAVS RS II Server program**

How to Set Up

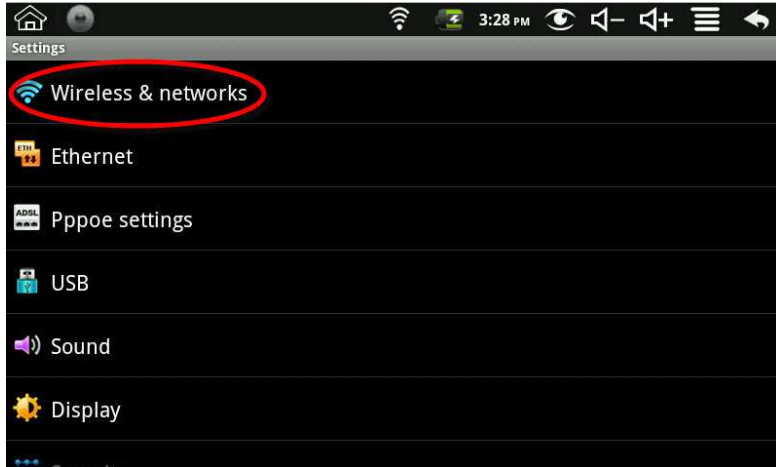
- The first step in setting up the E-Songbook is to confirm the proper running of CAVS RS II Server program in your CAVS Karaoke player or Windows based PC. For details, please go to **CAVS RS II Server program**.
- Turn on the E-Songbook by pressing the Power switch (usually for 2 - 3 seconds). After the initial sequence, the main Home page will appear with the CAVS RS icon. Press the Application window.



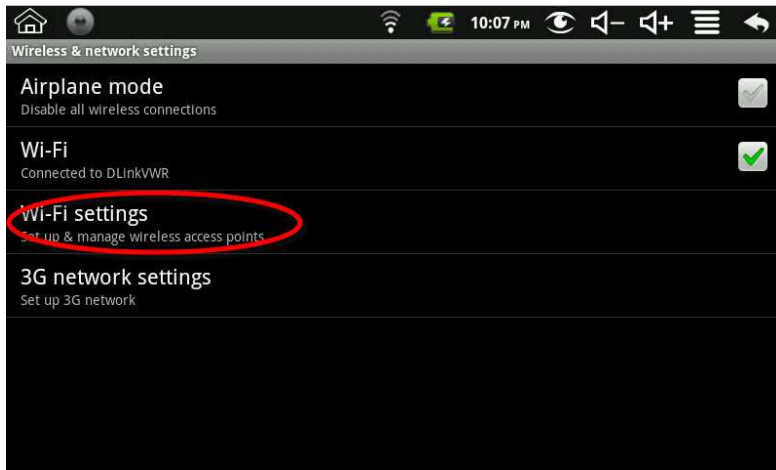
- Tap on the Settings in the Application window.



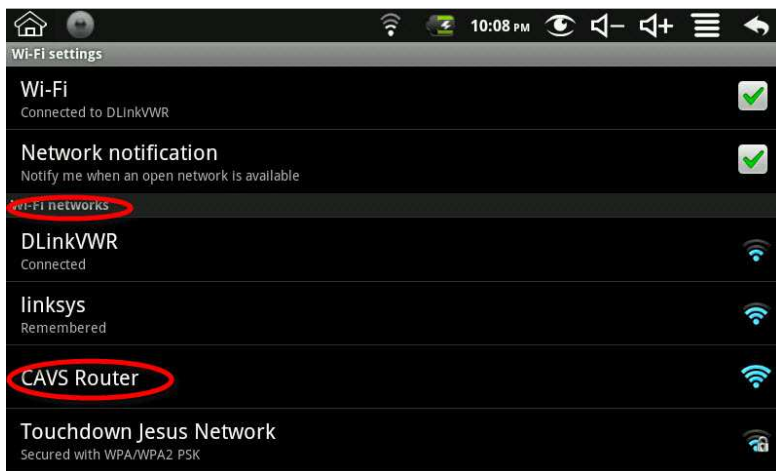
- Tap on the Wireless & networks.



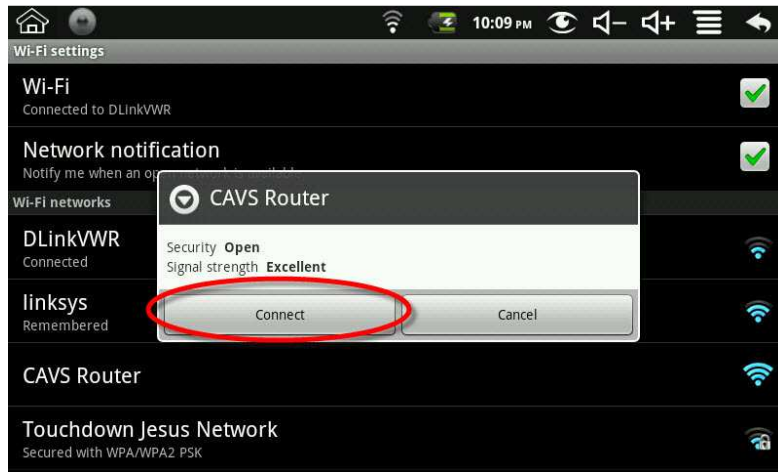
- Tap on Wi-Fi settings.



- Under Wi-Fi networks, find and tap on the wireless router connected to the CAVS RS II Server program (for example, CAVS Router).



- Next tap on Connect to connect the E-Songbook to the router. If the router is password protected, input the password.



- Return to the Home window.
- E-Songbook can also be used as a stand-alone unit without the CAVS RS II Server program without a connection to CAVS Karaoke player or Windows based PC. In this case, the E-Songbook can be used only for searching and the song list will be imported using a micro SD card.

E-Songbook can work as a stand-alone unit without a connection to CAVS Karaoke player or laptop / PC. As a simple song book, it can

- Import the song lists using a micro SD card.
- Select songs using Search, Sort, and Scroll.

After finding a song, customers will need to rely on a conventional method, such as paper notes, to pass the song selections to KJs.

For micro SD card,

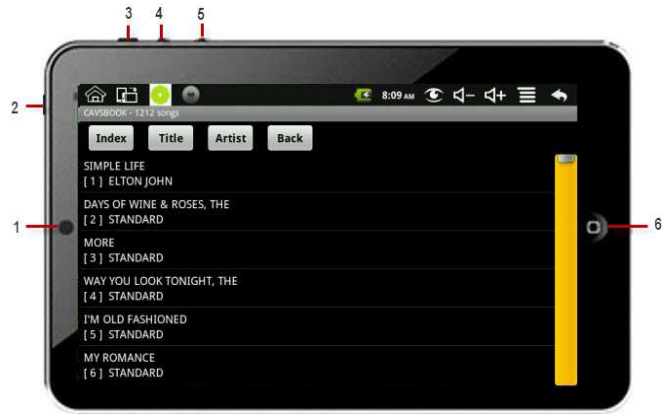
- Create a song list (.txt file) in the [CAVS RS format](#).
- Name the song list (.txt file) as cavsbook.txt and copy onto a micro SD card.

For E-Songbook,

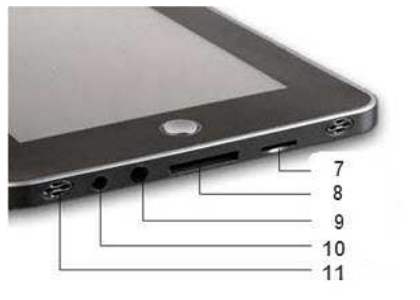
- Turn on the E-Songbook by pressing the Power switch (usually for 2 - 3 seconds).
- Insert the micro SD card into the E-Songbook.

Specifications of E-Songbooks

- **E-Songbook 107-VR**



1. Camera
2. Power switch
3. Menu
4. Volume Up
5. Volume Down
6. Back



7. micro SD card
8. Converter (Ethernet, USB)
9. Headphone
10. DC Input 9V
11. Speaker

- CAVS RS - CAVS Reservation System
- Android 2.2
- VIA 8650 CPU
- 7" RTP Touch Screen
- RAM DDR3 512 MB
- WI-FI 802.11b/g
- 0.3M Camera
- 3200 mah (2 - 3 hours)
- 9V DC Adapter - 10' cable
- User Manual

- **E-Songbook 108-SRB**



1. Camera
2. Menu
3. Power / Back
4. Home



- USB
- mini USB
- HDMI
- micro SD card
- Headphone
- DC Input 9V/12V
- CAVS RS - CAVS Reservation System
- Android 2.3
- Samsung S5PV210 CPU
- 8" RTP Touch Screen
- RAM DDR3 512 MB
- WI-FI 802.11b/g
- 0.3M Camera
- 6000 mah (5 - 6 hours)
- 12V DC Adapter - 10' cable
- User Manual
- HDMI cable

- **E-Songbook 108-SRC**



- 0. Home
- 1. Volume Up/Down
- 2. Power
- 3. Camera
- 4. Return
- 5. Menu



- Headphone
- USB
- DC Input 5V
- HDMI
- micro SD card
- Reset
- CAVS RS - CAVS Reservation System
- Android 2.3
- All Winner A10 Cortex-A8 1.2GHz CPU
- 8" CTP Touch Screen
- RAM DDR3 512 MB
- WI-FI 802.11b/g
- 1.3M Camera
- 6000 mah (5 - 6 hours)
- 5V DC Adapter - 10' cable
- User Manual
- HDMI cable

Features

- Display more than 200,000 songs in 40 different languages.
- Scroll and Jump
- Sort by Index, Title, or Artist
- Search by Index, Title or Artist
- Reserve to Queue
- Save to Favorite List
- Preset Pitch, Tempo, and Customer name
- Create and manage Favorite Lists
- Import song list using by Wi-Fi or micro SD card
- Connect up to 256 units simultaneously
- Play, Stop, Program, Next, and Cancel songs*
- Voice Cancel, Continuous / Single play mode*

* available when connected to CAVS Karaoke player.

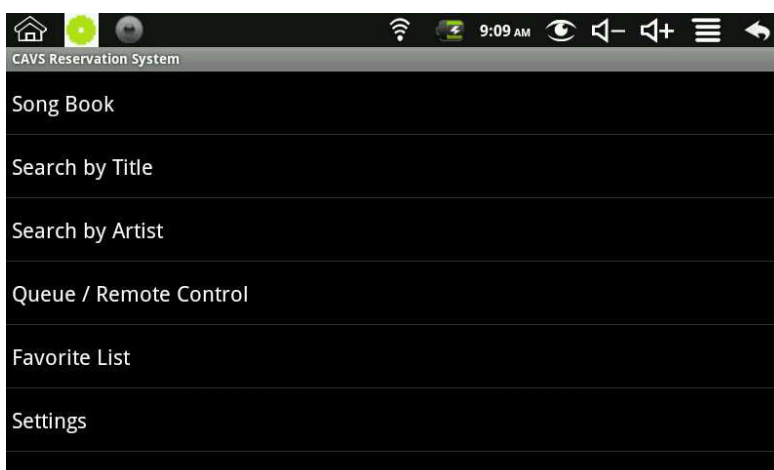
How to Operate E-Songbook

In the Home window of E-Songbook, tap on the CAVS RS II icon and start the program.

1. Main Menu

The Main Menu of CAVS RS program will appear with the following selections.

- Song Book
- Search by Title
- Search by Artist
- Queue / Remote Control
- Favorite List
- Settings



Note the colorful (red, blue, green) burst icon at the top left corner of the screen. It indicates

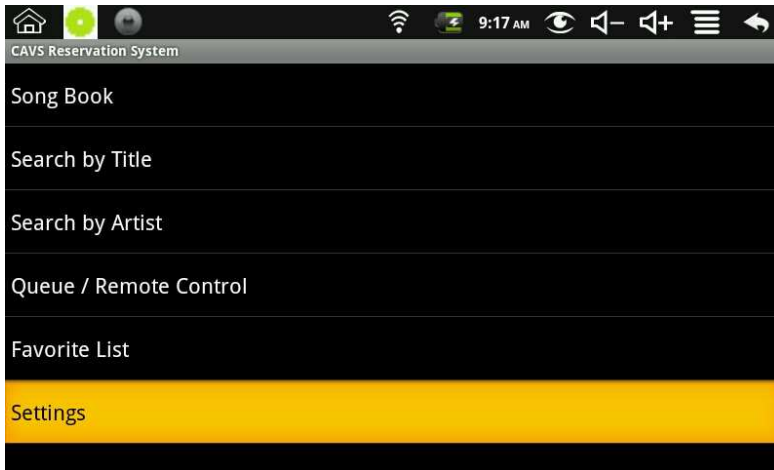
- Red: Not connected.

- Blue: Connecting / Importing a song list.
- Green: Importing completed / Ready to go.

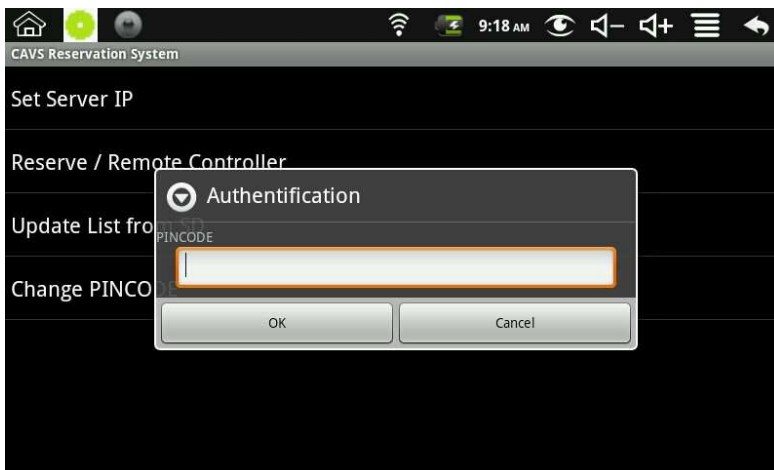
When CAVS RS II program is without a proper Wi-Fi connection, the burst icon will remain in red color.

2. Settings

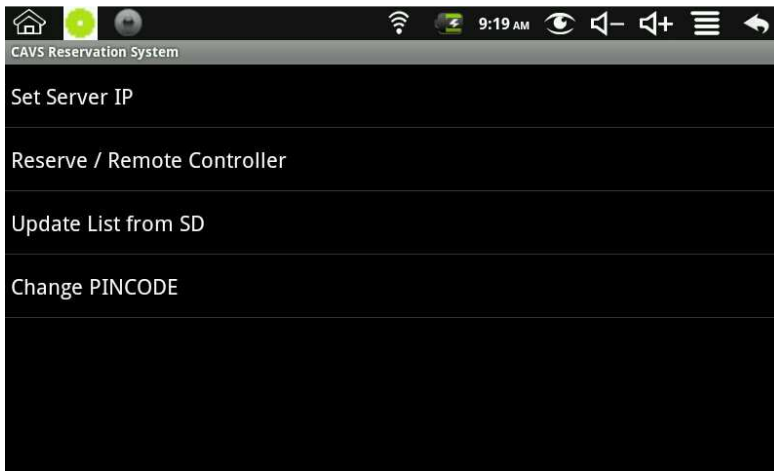
Tap on the Settings.



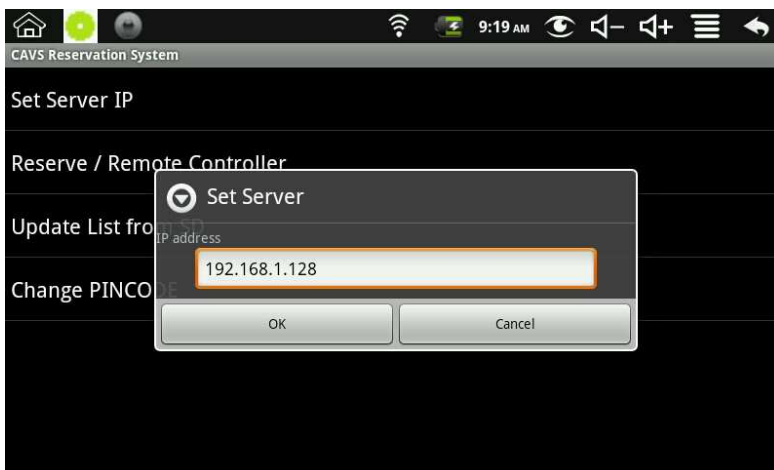
The default PINCODE required to enter is 0000 (four zeros). Tap on the input field to bring up the screen keyboard and type in the PINCODE.



The selections inside the Settings will appear.

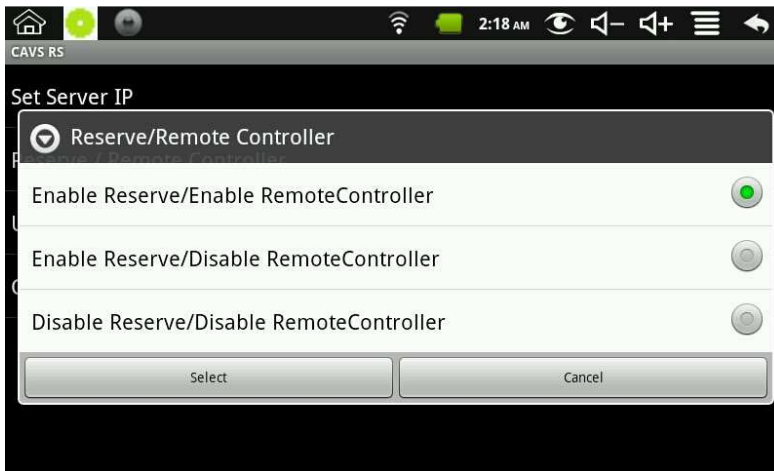


Tap on the Set Server IP which will bring up the following pop-up window. Tap on the input field to bring up the screen keyboard and type in the IP address of the CAVS Karaoke player or Windows based PC. Press OK. To obtain the IP address, Go to **CAVS RS II Server**.

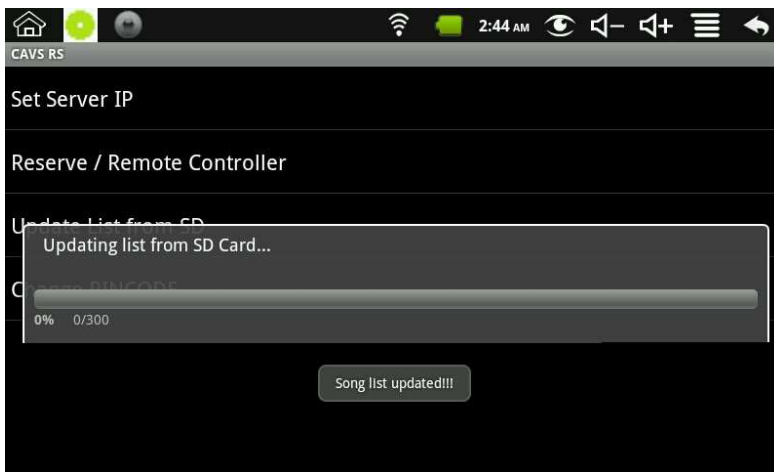


After setting the Server IP, the color of the burst icon on the top left corner will turn blue signaling a successful Intra-net connection. The burst will then turn green when importing the song list is completed and the E-Songbook is ready to use.

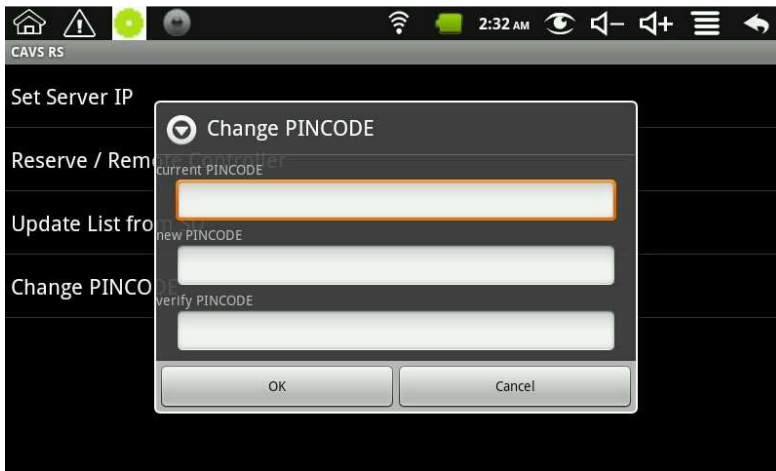
Tap on Reserve / Remote Controller and the following pop-up window will appear. Select from the three levels of controls that can be permitted in the E-Songbook. Press Select. Note that the level thus chosen is only secondary to the level of controls that is assigned by the CAVS RS II Server program to all connected E-Songbooks unilaterally.



When using the E-Songbook as a stand-alone unit, you can load the song list with a micro SD card. Insert the micro SD card (with a copy of the song list) into the E-Songbook. A message "Preparing SD card" will appear on the top left corner. Tap on Update List from SD. The song list in the micro SD card will begin loading into the E-Songbook.

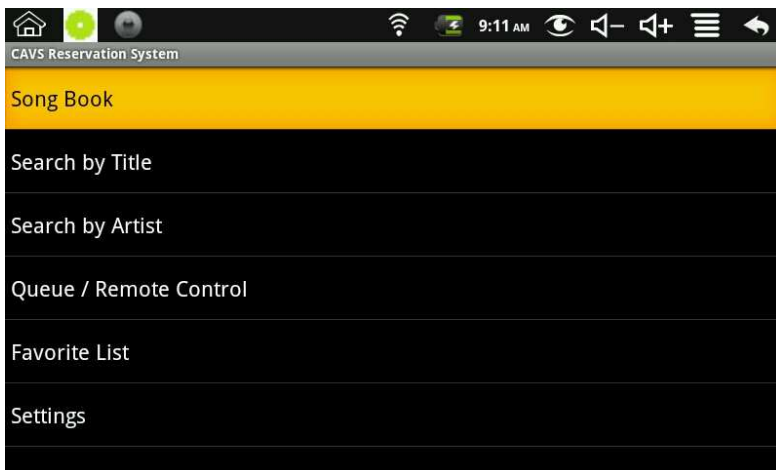


To change the PINCODE, tap on Change PINCODE. Follow the instruction on the screen.

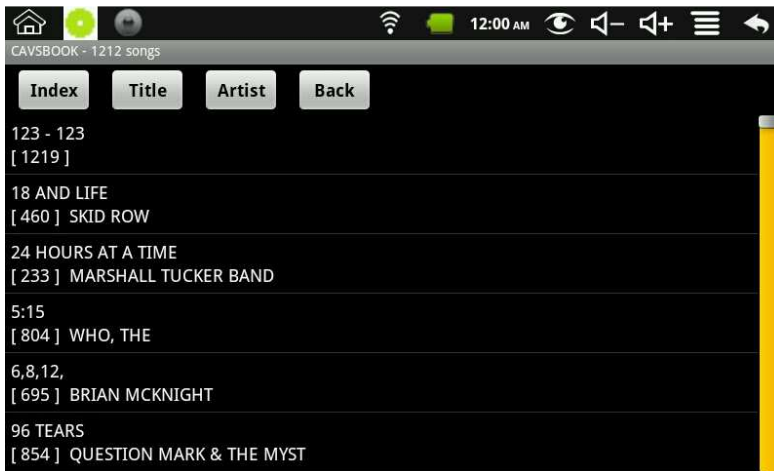


3. Song Book

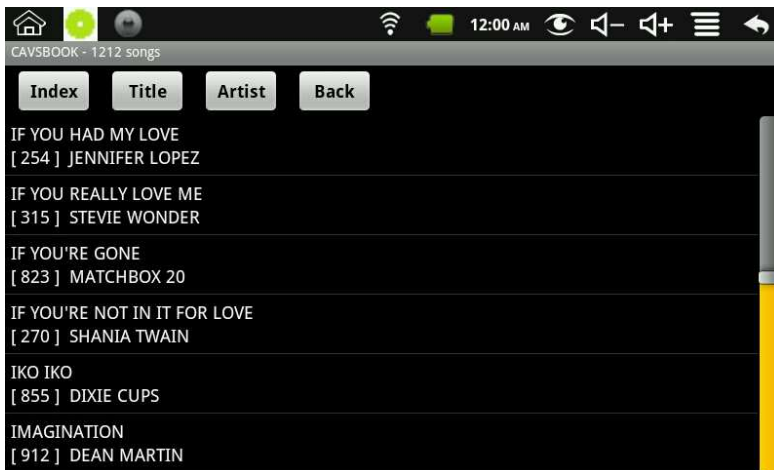
Tap on the Song Book.



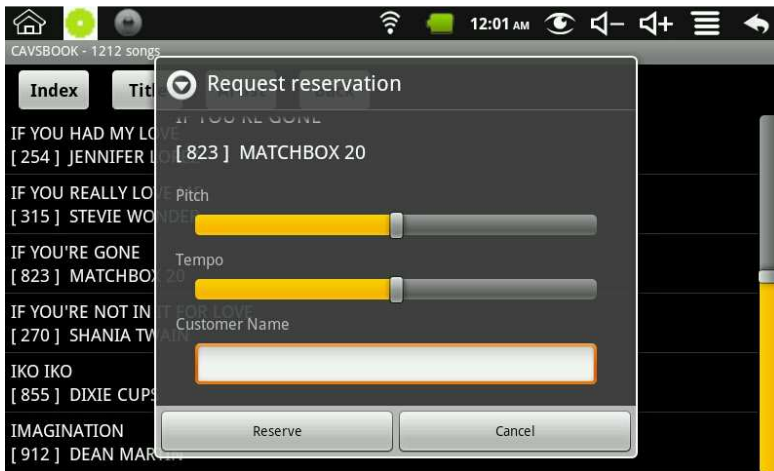
Total song list, sorted in title by default, will appear. You can re-sort the list by tapping on Index, Title, or Artist buttons.



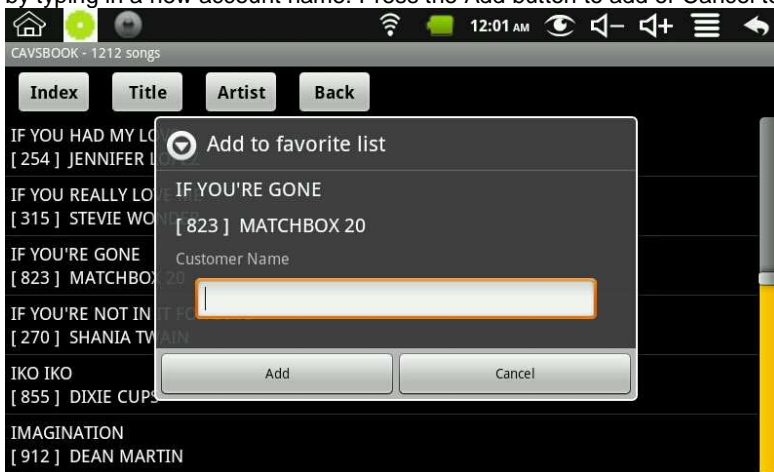
You can scroll up and down the song list with your fingertips. You can also instantly jump to any page in the song list by tapping on the yellow bar on the right.



Tap on a song you wish to select. Request reservation window will appear. Press the Reserve button to reserve the song, Add Fav. button to add the song to a Favorite List, or Cancel to return. Before reserving, you have the options to preset the Pitch (Key) level, Tempo level, and the Customer Name. To input the Customer Name, tap on the input field to bring up the screen keyboard.



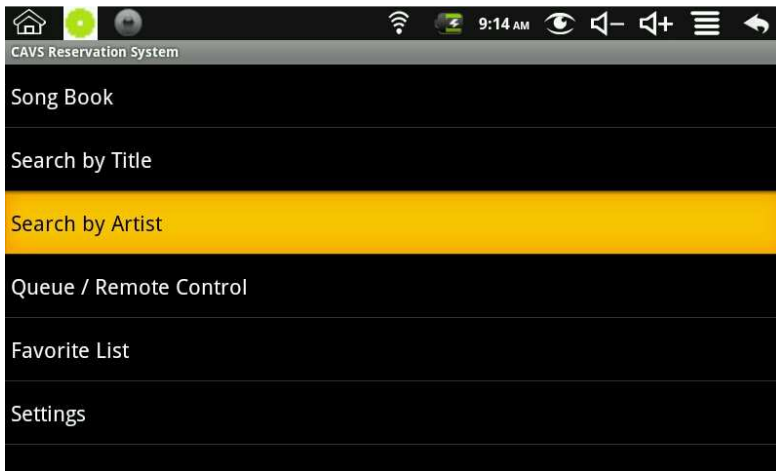
Tap and hold a song you wish to select. Add to favorite list window will appear. Tap on the input field to bring up the screen keyboard. Type in the account name of the Favorite List or create a new Favorite List by typing in a new account name. Press the Add button to add or Cancel to return.



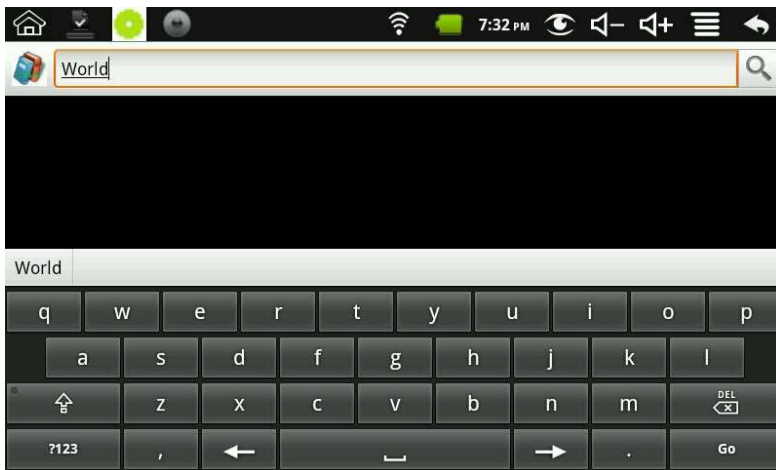
For further instructions on how to use the Favorite List, go to the Section 6. Favorite List below.

4. Search by Title

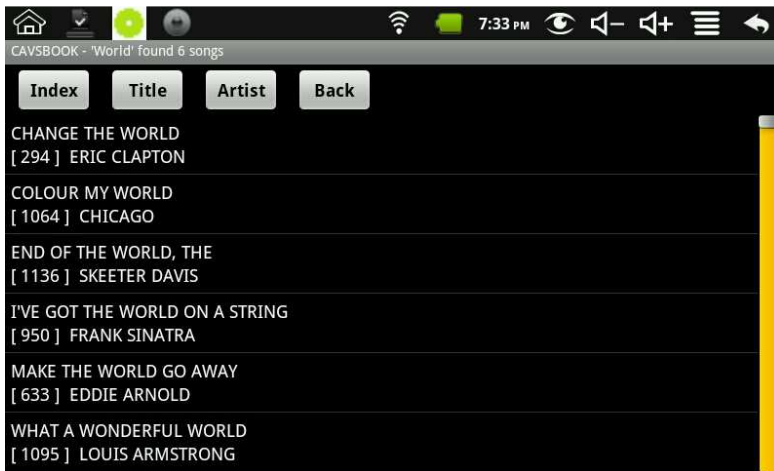
Tap on the Search by Title.



A search window will appear as below . Type in the word you wish to search (for example, World). Press Go.



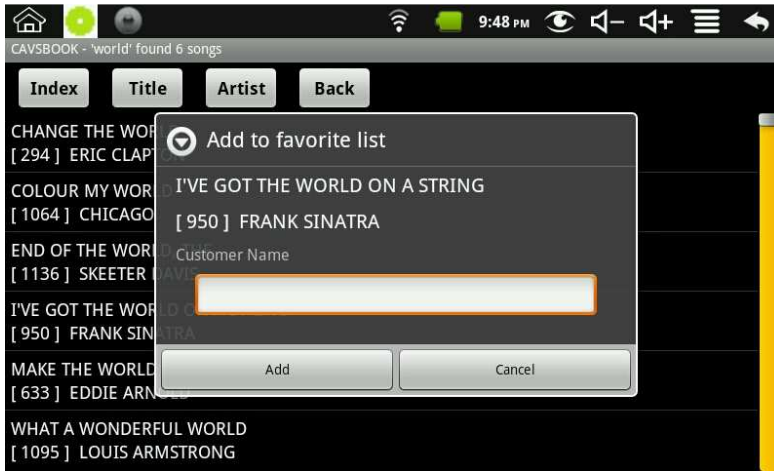
Search result with matching songs will appear. You can sort this list of matching songs by Index, Title, or Artist by pressing the respective buttons.



Tap on a song you wish to select and the Request reservation window will appear. Press the Reserve button to reserve the song, Add Fav. to add the song to a Favorite List, or Cancel to return. Before reserving, you can preset the Pitch (Key) level, Tempo level, and the Customer Name. To input the Customer Name, tap on the input field to bring up the screen keyboard.



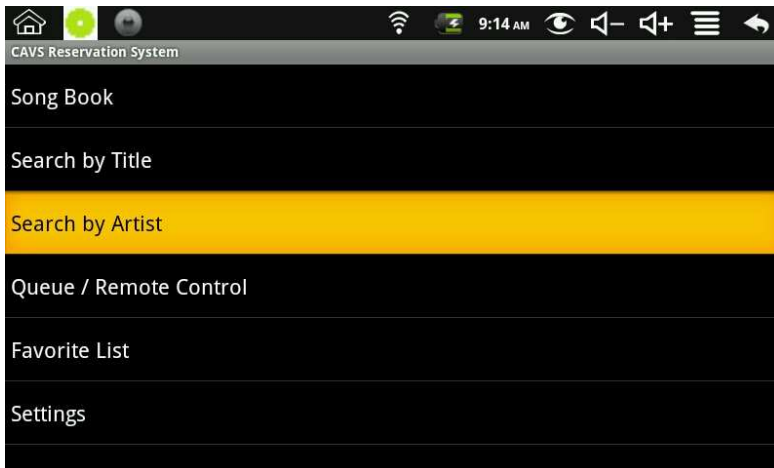
Tap and hold a song in the search result to bring up the Add to favorite list window. Tap on the input field to bring up the screen keyboard. Type in the account name of the Favorite list or create a new Favorite List by typing in a new account name. Press the Add button to add or Cancel to return.



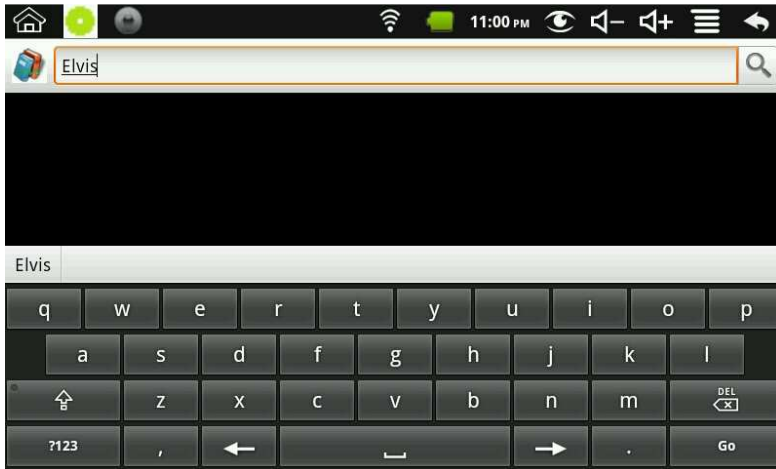
For further instructions on how to use the Favorite List, go to Section 6. Favorite List below.

5. Search by Artist

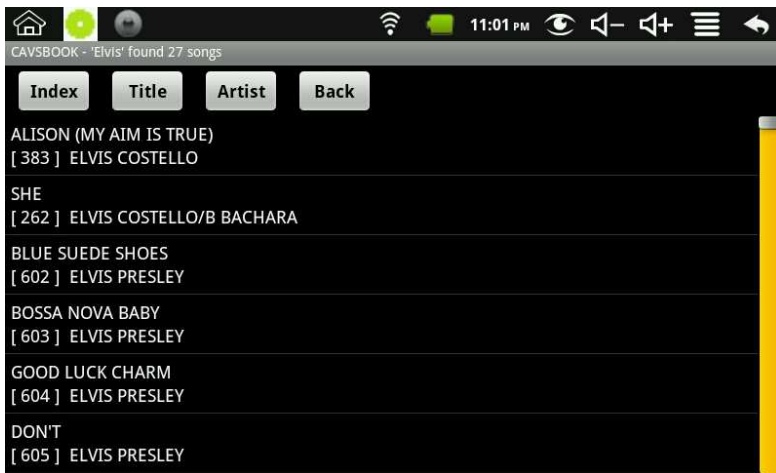
Tap on the Search by Artist.



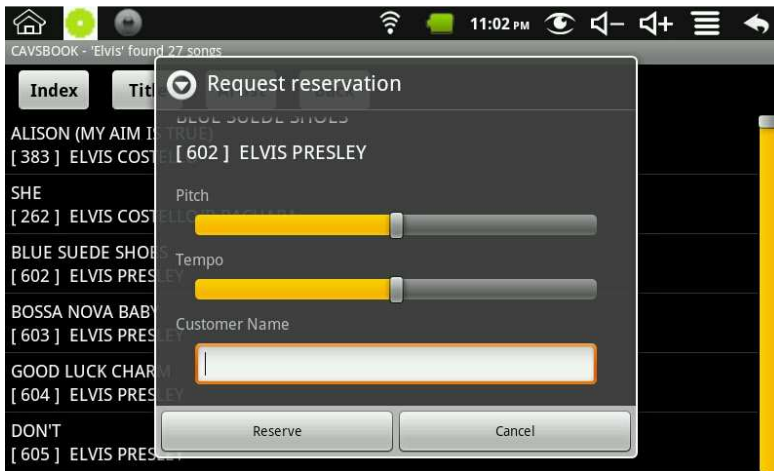
A search window will appear as below . Type in the word you wish to search (for example, Elvis). Press Go.



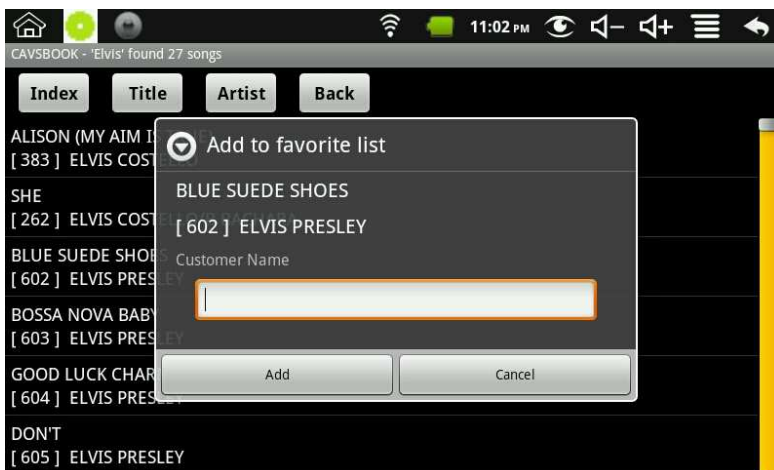
Search result with matching songs will appear. You can sort this song list by Index, Title, or Artist by pressing the respective buttons.



Tap on a song you wish to select and the Request reservation window will appear. Press the Reserve button to reserve the song, Add Fav. to add the song to a Favorite List, or Cancel to return. Before reserving, you can preset the Pitch (Key) level, Tempo level, and the Customer Name. To input the Customer Name, tap on the input field to bring up the screen keyboard.



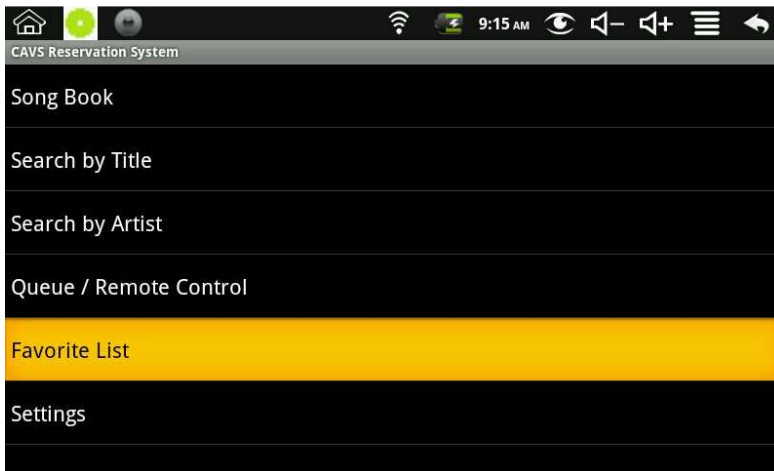
Tap and hold a song in the search result to bring up the Add to favorite list window. Tap on the input field to bring up the screen keyboard. Type in the account name of the Favorite list or create a new Favorite List by typing in a new account name. Press the Add button to add or Cancel to return.



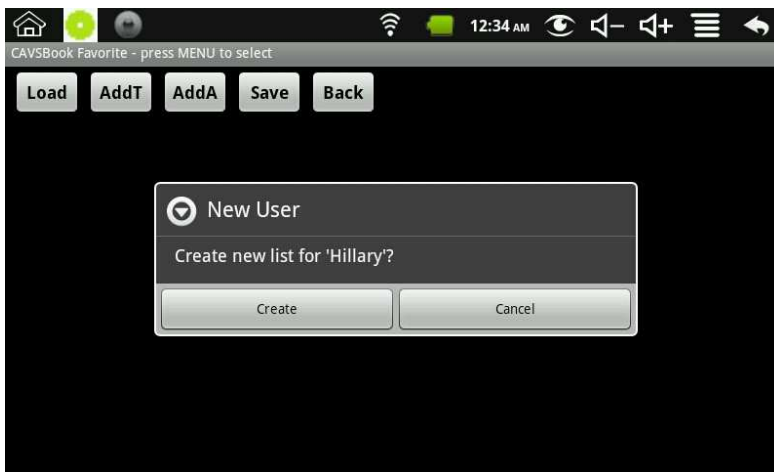
For further instructions on how to use the Favorite List, go to Section 6. Favorite List below.

6. Favorite List

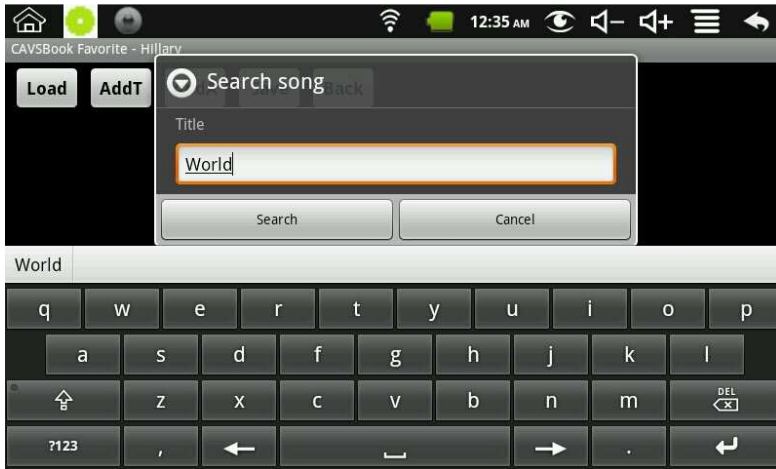
Tap on the Favorite List.



Press Load and Customer window will appear asking for the name of the Favorite List to display. If you had opened a Favorite List previously, the same Favorite List will appear by default. To change, press the Load button and type in another account name. If you wish to create a new Favorite List, type in a new account name and follow the instruction.



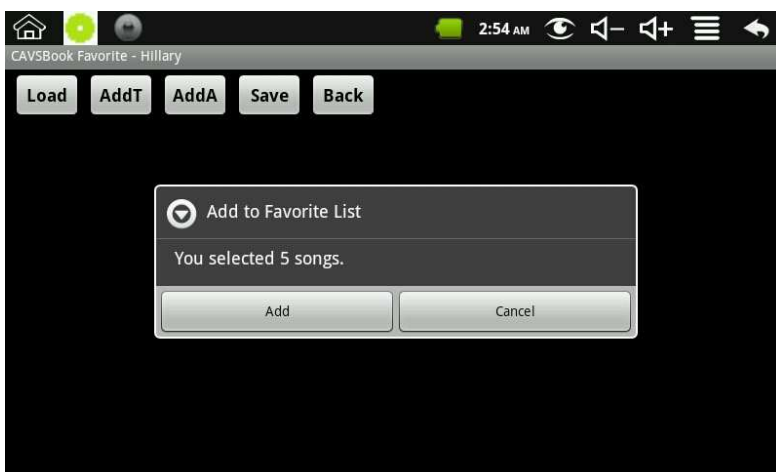
To add songs to a Favorite List, press AddT button to find songs by title or AddA button to find by artist.



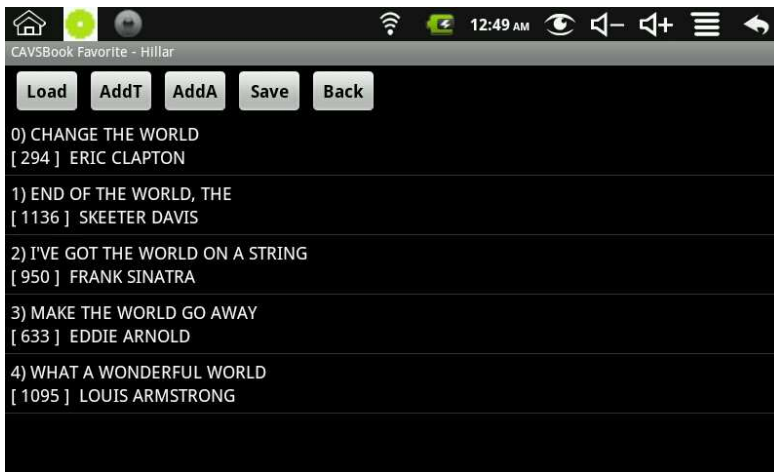
From a search result, select the songs you wish to add by placing check marks followed by pressing Add.



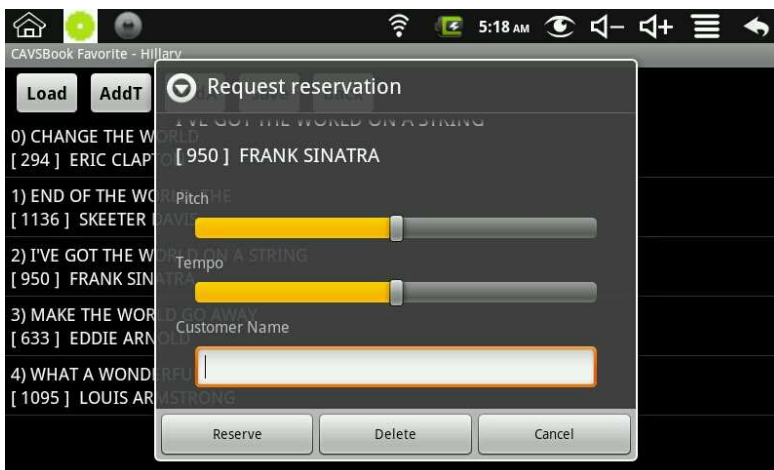
Next confirm to add the songs you have selected by pressing Add button.



The Favorite List will now show the added songs.

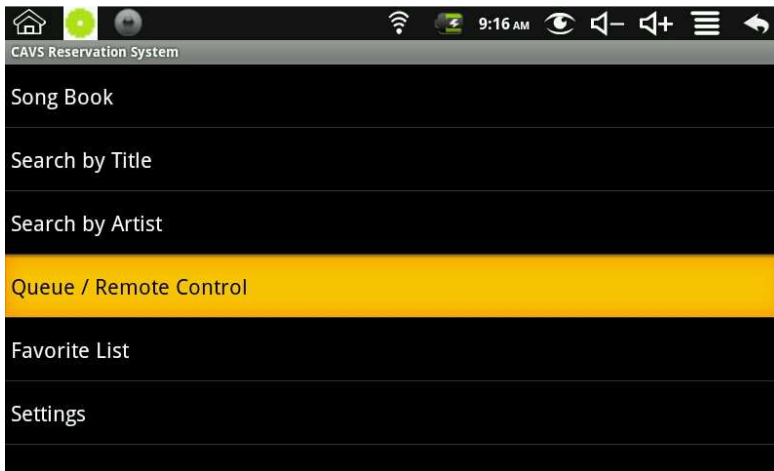


Tap on a song and press Reserve to reserve the song, Delete to delete the song from the Favorite list, or Cancel to return to the Favorite List.



7. Queue / Remote Control

Tap on the Queue / Remote Control



The next screen will depend on your selection for Reserve/Remote Controller in the Settings. See Section 2. Settings for instruction of how to change the selection.

For the case of Enable Reservation / Enable Remote Controller, the following window will appear. You can use the window to:

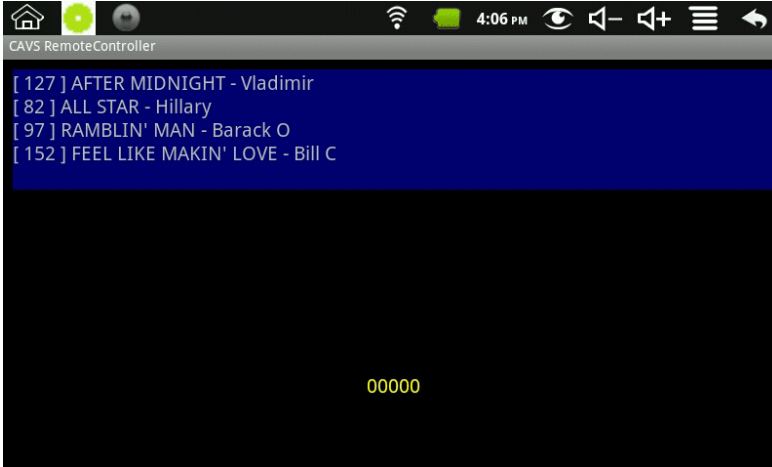
- View the reserved songs in Queue
- Select a song using the numeric buttons (for example, 12345)
- Reserve (Prog)
- Play
- Stop
- Play the next song in Queue (Next)
- Cancel a song in Queue - Input the song number and press Cancel
- Pitch control
- Tempo control
- Continuous / Single play mode
- Voice cancel



For the case of Enable Reservation / Disable Remote Controller, the following window will appear. You can use the window to:

- View the reserved songs in Queue

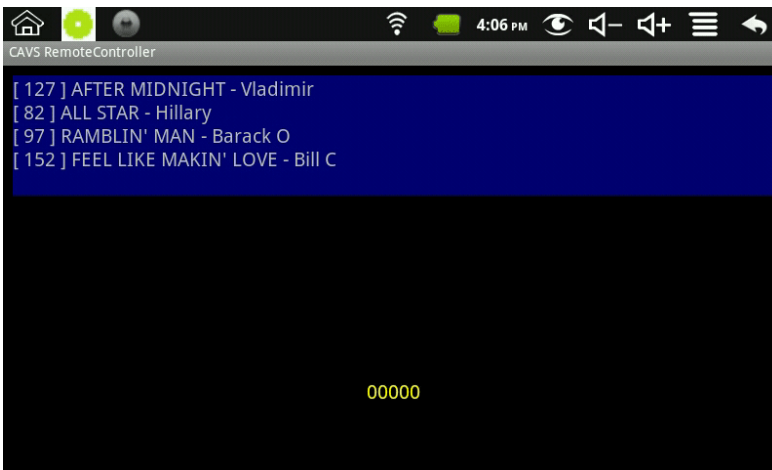
As shown above, songs can be reserved into Queue from Song Book, Search by Title, Search by Artist, or Favorite Lists.



For the case of Disable Reservation / Disable Remote Controller, the following window will appear. You can use the window to:

- View the reserved songs in Queue

You can only browse the songs through Song Book, Search by Title, or Search by Artist, and save the songs into Favorite Lists.



How to Operate CAVS RS II Server program

[CAVS RS II \(Reservation System\) Server program](#) runs within host units, such as CAVS Karaoke players or Windows based laptop / PC, to communicate with E-Songbooks. Please go to [CAVS RS II Server program](#) for the description and instruction on how to operate the program.